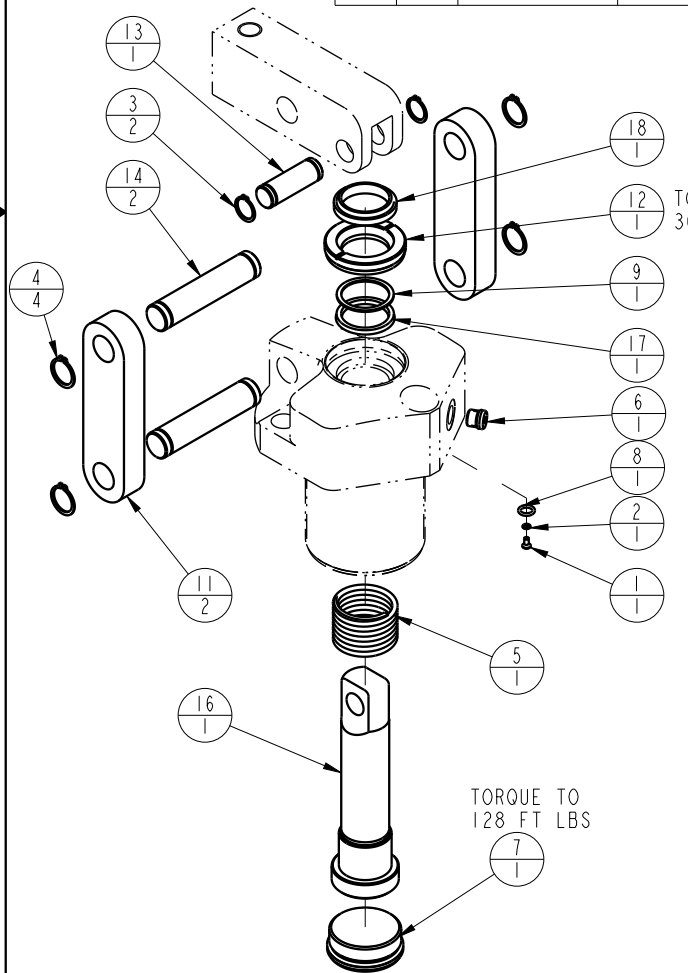


1		2			
MODEL NO.			MODEL NAME		
16611600			ASSY, LC, SA, 5000		
NO.	QTY	PART NO.	DESCRIPTION	STD SEAL KIT	FKM SEAL KIT
1	1	21500019	SCREW, CAP, BTNH, M3 X 6, ALY		
2	1	21500200	WASHER		
3	2	23050024	RING, RTNG, EXT, 0.625	X	X
4	4	23050025	RING, RTNG, EXT, 0.750	X	X
5	1	23350052	SPRING, COMPRESSION		
6	1	30601144	PLUG, SOCH, SAE 4		
7	1	30670005	PLUG, SAE 24, FKM	X	X
8	1	39050042	O-RING, (-011)	X	39051025
9	1	39054008	BU RING, (-218)	X	X
10	1	67040065	TAG, LINK ASSY, LC		
11	2	81600025	LINK, LC, 6800 1b		
12	1	81600040	RETAINER, LC, 6800		
13	1	81600080	PIN, LC, SHORT, 6800		
14	2	81600085	PIN, LC, LONG, 6800		
16	1	81600116	PLUNGER, LC, SA, 5000/22 KN		
17	1	39H52035	SEAL, BEVEL, 1-1/4 x 1/8 x 1-1/2	X	39V52035
18	1	39V53030	WIPER, SNAP-IN, (1-1/4)	X	X
N/A	N/A	60160015	KIT, SEAL, LC, SA, 5000	NOTED	
N/A	N/A	6V160015	KIT, SEAL, LC, SA, 5000, FKM		NOTED



TORQUE TO 30 FT-LBS

TORQUE TO 10-11 IN LBS

TORQUE TO 128 FT LBS

2. ALL SEALS, BU RINGS, RETAINING RINGS, O-RINGS, AND PLUGS ARE INCLUDED IN THE SEAL KIT.

1. APPLY LUBRICANT TO ALL SEALS PRIOR TO ASSEMBLY.

NOTE:

PARTS LIST



VEKTEK, INC.
1334 E. SIXTH AVE. P.O. BOX 625
EMPORIA, KS. 66801 U.S.A.

ASSEMBLIES AFFECTED
16-6116-00

PARTS LIST, LC, SA, 5000

SIZE
A

PL1610

REV
D

D	5718	RELEASE	NPETERS	6/9/25
REV	IN ACCORDANCE WITH ECN	EFFECTIVE DATE	REVISED BY	DATE
DRW BY:	K. ROEMER	DRAWING STATUS: Released		
DATE:	07/30/04	PRODUCTION APPROVED FOR RELEASED STATUS ONLY		